

TruSelector

Colorchip Program

TCI COLOR CHIP SELECTOR PROGRAM

Selecting the best colors for a project often entails tapping into your creative side and experimenting with the many possibilities available to find the ideal color palette, a task made much more difficult if you don't have the necessary samples to conduct an accurate research.

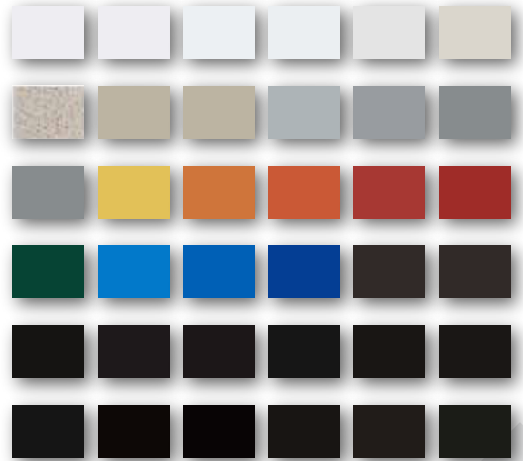
Color cards and images on websites can offer a good representation of general color, but they can't perfectly replicate the value and tone of the color once the powder is applied to a metal substrate. While providing powder coating samples on request is a viable solution for accurate color matching, preparing and shipping the samples requires additional time that risks putting your project behind schedule.

Our Color Chip Selector Program resolves these challenges by supplying you with 2"x3" chips coated in more than 400 of our most popular colors from our extensive portfolio of powder coatings, allowing you to freely explore your creativity. All the chips are created according to our quality control process to ensure the powders are applied at the recommended film build and meet our quality appearance specifications before being placed into inventory and released for shipment.

To further enhance the usability of the Color Chip Selector, we offer a wall-mounted display system so you can quickly and easily access your chips.

Contact TCI Powder Coatings' Chip Program at tcichip@tcpowder.com or call 800.533.9067 for more information.

TCI Powder Coatings
300 Martin Marietta Drive
Americus, GA 31719
Phone: 800.533.9067
Fax: 800.265-0404



TCI CHIP PROGRAM FEATURES AND BENEFITS

- Display 400+ of the most popular colors from TCI's extensive portfolio of powder coatings
- All color chips are available on demand reducing any unnecessary time ordering and spraying samples
- Wall-mounted color selector available for easy display
- All color chips go through a quality control process prior to being placed into inventory
- Order all chips to display on your wall-mount or order as little as one at a time on demand
- Chips will be mailed directly to you or to your customer if requested

TCl CHIP PROGRAM FEATURES AND BENEFITS

There is a maximum of (3) chips per color and a maximum of 10 different chip (colors) per individual order for existing TCl customers.
 New customers, please contact our inside sales department at (302) 602-8731. There will be a \$25.00 processing fee for panel orders.

| Qty | Product No. | Product Name | Qty | Product No. | Product Name | Qty | Product No. | Product Name | Qty | Product No. | Product Name |
|-----|-------------|----------------------|-----|-------------------|-----------------------------|-----|-----------------------|---------------------------|-----|--------------|-------------------------|
| | 6000 Series | | | 9610-7040 | Storm Grey | | 7760-3931 | LC Red Oxide Primer | | Multi Colors | |
| | 6920-9031 | Arctic White | | 9530-70200 | HPC 61 Grey | | 8210-91232 | HH Black Primer | | 8006-60034M | Jade |
| | 6323-9037 | White Peel | | 9900-7111 | Win Grey | | Clears | | | 8006-9982M | Grey Speckle |
| | 6920-91067 | Universal White | | 9820-7146 | Accuride Grey | | 8910-0231 | Anti-Graffiti 90 Clear | | 8016-10444M | Speckled Pearl |
| | 6820-9189 | Cabinet White | | 9810-1070 | Golden Yellow | | 9030-01311 | SD 10 Clear | | 8016-2072M | Clay Pot |
| | 6232-9044 | White Tex | | 9810-1268 | Safety Yellow | | 9310-01308 | SD 40 Clear | | 8016-60074M | Mint Speckle |
| | 6820-1065 | Antique White | | 9610-73080 | SD Array Grey | | 9710-01307 | SD 70 Clear | | 8016-8358 | Bronze Age III |
| | 6720-90335 | Oyster White | | 9810-2113 | Sonny Orange II | | 9910-0000 | 90 Clear | | 8016-8637M | Moccasin |
| | 6720-9262 | Cabinet Beige | | 9910-2352 | October Orange | | 9910-01289 | SD 90 Clear | | 8016-8799M | Speckled Oak |
| | 6820-1060 | Almond | | 9810-3042 | Ruby Red | | Ag & Construction | | | 8016-8853M | Moon Dust |
| | 6132-1056 | Almond Tex | | 9910-3921 | Chili Pepper | | 9920-12085 | CNH Power Tan | | 8016-8855M | Speckled Bronze |
| | 6920-1229 | Piedmont Almond | | 9810-6046 | Ivy Green | | 9920-72188 | CNH CE Gray | | 8016-8939M-1 | Cappuccino II |
| | 6720-1062 | Champagne | | 9910-5067 | Azure Blue | | 9910-10503 | SD Cat Yellow | | 8103-8675M | Textured Copper |
| | 6550-71817 | Lowes Grey 300 II | | 9810-5413 | Bahama Blue Poly | | 9840-60728 | FC SD JD AG Green | | 8118-0610M | SG Ultra Bronze Ext. |
| | 6820-7059 | Circuit Grey | | 9910-5054 | Ocean Blue | | 9920-51087 | CNH NH Blue | | 8118-0611M | LC Bronze Age |
| | 6620-7530 | RAL 7040 Grey | | 9910-8036 | Dark Sienna | | 9920-72190 | CNH Dark Gray | | 8208-0422M | Bronze Silverado |
| | 6720-7050 | Mercury Grey | | 9611-01069 | SD Statuary Bronze | | 9420-91835 | CNH Black | | 8314-0284 | Silverado II |
| | 6132-7047 | Fog Grey | | 9002-9324 | JAGA Tex Polyester | | 9350-91614 | FC SD JD Black | | 9016-1559M | Sandstone |
| | 6820-1147 | Brite Yellow | | 9030-90922 | SD Flat Black | | 9210-90663 | SD Cat Black | | 9016-60110M | Jade Crater |
| | 6820-2004 | RAL 2004 | | 9320-92439 | New LC Poly Satin Black | | Durance Architectural | | | 9016-8336 | Burst Rust |
| | 6820-3063 | Fire Red | | 9350-91411 | FC Matte Black | | 10310-91095 | Bone White/AAMA 2604 | | 9016-8630M | Copper Tex III |
| | 6820-3044 | Winchester Red | | 9510-91039 | SD Mineral Black | | 10810-91787 | AAMA 2604 Sky White II | | 9016-8953M | Mojave |
| | 6820-5061 | Cobalt Blue | | 9012-9000 | Tex Black | | 11710-92256R | AAMA 2605 Sky White II | | 9116-80184M | Old Bronze |
| | 6032-9000 | Black Tex | | 9042-90137 | LC Black Tex | | 10710-91840A | AAMA 2604 Window White | | 9016-80072M | Pompeian Gold II |
| | 6420-9540 | 45 Black | | 9310-90160-G | SD Black Polyester | | 10510-91602A | AAMA 2604 Satin White | | 9306-10278M | Terra Sand |
| | 6920-9000 | Channel Black | | 9310-90278-2 | Satin Black Polyester | | 10511-0997 | AAMA 2604 Bronze | | 9316-7658M | Granite Multi |
| | 7000 Series | | | 9313-9000 | Poly Black Peel | | 10310-92050 | AAMA 2604 Polar White | | 9316-8644M-2 | Java II |
| | 7334-0060 | Copper Vein | | 9330-90775 | LC Poly Satin Black | | 10510-91922A | AAMA 2604 New Bone White | | 9316-8998M | Pecan |
| | 7334-0065 | Silver Vein | | 9840-2461R | Safety Orange | | 11510-92253R | AAMA 2605 New Bone White | | 9336-10146M | LC Pebble |
| | 7010-9236 | JAGAXXJ Flat Black | | 9510-92337 | Echo Black | | 10510-11712 | AAMA 2604 RAL 1013 | | 9416-7633M | Mocha |
| | 7010-9000 | Flat Black | | 9510-91410 | Lava Black | | 10410-12088A | AAMA 2604 Matte Cream | | 9416-9503M | Luna |
| | 7110-9000 | 10 Black | | 9710-9000 | Cargo Black | | 11510-12203R | AAMA 2605 Matte Cream | | Metallics | |
| | 7210-9000 | Trans Black | | 9740-90637 | Super Slip Black II | | 10510-12082A | AAMA 2604 Sandstone | | 9811-0110 | Wheel Silver |
| | 7420-90147 | 40 Black Epoxy | | 9910-9845 | Accuride Black II | | 10610-12080A | AAMA 2604 Beige | | 9911-01007-1 | Bonded Chrome TGIC |
| | 7830-9000 | Auto Chassis Black | | 9910-9000 | Shuttle Black | | 11610-12102R | AAMA 2605 Beige | | 9911-01304 | Mirror Silvadillo |
| | 8000 Series | | | 9910-9845HF | HF Accuride Black II | | 10310-51228 | AAMA 2604 Interstate Blue | | 9611-01333 | Stainless Steel 2.5 |
| | 8810-9074 | Furniture White | | Tru Hammers | | | 10310-61545 | AAMA 2604 Teal | | 8212-01185 | Stainless Steel Tex III |
| | 8400-9053 | Satin White | | 9215-01910 | Silver Rock Hammer | | 10420-61537 | AAMA 2604 Pantina Green | | 9711-0259 | Bright Argent Metallic |
| | 8810-7097 | Tropic Grey | | 9315-01811 | Brown Hammer | | 10310-61074 | AAMA 2604 RAL 6005 | | 8112-0889 | Kessler Silver |
| | 8300-7087 | 61 Grey | | 9315-92132 | Dark Pewter Hammer | | 10410-61542 | AAMA 2604 Hartford Green | | 9811-0540 | Stardust Silver II |
| | 8810-10577 | Goldenrod | | Tru Wrinkles | | | 11410-61627R | AAMA 2605 Hartford Green | | 9511-01405 | Anodized Aluminum |
| | 8910-3067 | Blood Red | | 8027-51311 | Surf Blue Wrinkle | | 10310-71748 | AAMA 2604 RAL 7006 | | 9511-01413 | New Alpine Silver |
| | 8000-9000 | Dash Black | | 8027-81460 | Coffee Brown Wrinkle | | 10510-81101A | AAMA 2604 Toffee | | 9114-0346 | Poly Silver Vein |
| | 8017-91612 | DF Black Wrinkle III | | 8027-92251 | CA Black Wrinkle | | 10610-81102A | AAMA 2604 Chestnut Brown | | 9114-0608 | Weatherveine |
| | 8200-9000 | Satin Black | | Tru Peel | | | 10410-81104A | AAMA 2604 Window Bronze | | 9415-71531 | Sam Grey Hammer |
| | 8510-9000 | Universal Black | | 9313-92513 | SD Dixie Black Peel | | 10310-80795A | AAMA 2604 New Dark Bronze | | 9211-01410 | SD Oil Rubbed Bronze |
| | 8702-9000 | JASAXXG | | Tru Illusions | | | 10310-302550A | AAMA 2604 Redwood | | | |
| | 8910-9000 | Gloss Black | | 9911-01869R | Trullusion Silver | | 11410-30266R | AAMA 2605 Redwood | | | |
| | 9000 Series | | | Tru Erase | | | 10310-30353 | AAMA 2604 Burgundy | | | |
| | 9910-9035 | Crystal White | | 8800-92213 | Crystal Eraser White | | 10310-71747 | AAMA 2604 RAL 7038 | | | |
| | 9910-9897 | Sky White II | | Federal Standards | | | 10310-71751 | AAMA 2604 RAL 7045 | | | |
| | 9910-9741 | Brite White | | 8010-10828 | Fed Std 33446 | | 10410-72503 | AAMA 2604 Slate Gray | | | |
| | 9610-9021 | Pompano White | | 8010-60063 | Fed 34094 Green | | 11410-72756R | AAMA 2605 Slate Gray | | | |
| | 9313-9062 | Poly White Peel | | 8010-91335 | Fed Std 37038 | | 10940-92248 | AAMA 2604 Gloss Black | | | |
| | 9910-1045 | Pasta | | Primers | | | 11710-92255R | AAMA 2605 Gloss Black | | | |
| | 9820-12266 | Miracle Almond | | 7820-12396 | Beige Primer OGF | | 10620-92153A | AAMA 2604 Satin Black | | | |
| | 9810-1048 | Sandlewood | | 7010-71529 | Sam Primer Gray | | 11610-92252R | AAMA 2605 Satin Black | | | |
| | 9810-1049 | Mesa Tan | | 7520-70138 | Zinc Rich Primer | | 10310-91809A | AAMA 2604 Matte Black | | | |
| | 9810-7042 | Elec. Grey/ASA 70 | | 7820-71737 | Epoxy Primer Mil Spec 53022 | | 11410-92252R | AAMA 2605 Matte Black | | | |
| | 9510-70039 | Super Grey 61 | | 8510-7833 | HH Grey Primer | | 11310-87125R | AAMA 2605 Window Bronze | | | |

TCI CHIP PROGRAM FEATURES AND BENEFITS

There is a maximum of (3) chips per color and a maximum of 10 different chip (colors) per individual order for existing TCI customers.
New customers, please contact our inside sales department at (302) 602-8731. There will be a \$25.00 processing fee for panel orders.

| Qty | Product No. | Product Name | Qty | Product No. | Product Name | Qty | Product No. | Product Name | Qty | Product No. | Product Name |
|-----|-------------|--------------------------|-----|-------------|--------------------------|-----|-------------|----------------------------|-----|-------------|-------------------------|
| | 9411-01409 | Quaker-40 Bronze | | 9840-11914R | RAL 1013 Oyster White | | 9840-2466R | RAL 2000 Yellow Orange | | 9840-30211R | RAL 3009 Oxide Red |
| | 9811-01408 | SD Starlight Black | | 9840-11992R | RAL 1014 Ivory | | 9840-2469R | RAL 2001 Red Orange | | 9840-71977R | RAL 7035 Light Grey |
| | 9911-01406 | Black Chrome | | 9840-11974R | RAL 1015 Light Ivory | | 9840-2468R | RAL 2002 Vermilian | | 9840-72007R | RAL 7037 Dusty Grey |
| | 9711-01407 | SD Harvest Gold | | 9840-11963R | RAL 1016 Sulfur Yellow | | 9840-2467R | RAL 2003 Pastel Orange | | 9840-72045R | RAL 7005 Mouse Grey |
| | 9921-01023 | SD Coppertop | | 9840-12010R | RAL 1017 Saffron Yellow | | 9840-2461R | RAL 2004 Pure Orange | | 9840-72047R | RAL 7043 Traffic Grey |
| | 9012-0050 | Silver Tex | | 9840-11955R | RAL 1018 Zinc Yellow | | 9840-2473R | RAL 2008 Bright Red Orange | | 9840-72011R | RAL 7012 Basalt Grey |
| | RAL Colors | | | 9840-11916R | RAL 1019 Grey Beige | | 9840-2462R | RAL 2009 Traffic Orange | | 9840-72121R | RAL 7016 Anthracit Grey |
| | 9840-12040R | RAL 1000 Green Beige | | 9840-11972R | RAL 1020 Olive Yellow | | 9840-2464R | RAL 2010 Signal Orange | | 9840-30202R | RAL 3020 Traffic Red |
| | 9840-11989R | RAL 1001 Beige | | 9840-12005R | RAL 1021 Rapeseed Yellow | | 9840-2465R | RAL 2011 Deep Orange | | 9840-50917R | RAL 5015 Sky Blue |
| | 9840-11993R | RAL 1002 Sand Yellow | | 9940-11910R | RAL 1023 Traffic Yellow | | 9840-2460R | RAL 2012 Salmon Orange | | 9840-50955R | RAL 5017 Traffic Blue |
| | 9840-11990R | RAL 1003 Signal Yellow | | 9840-11995R | RAL 1024 Ochre Yellow | | 9940-30198R | RAL 3000 Flame Red | | 9840-80992R | RAL 8011 Nut Brown |
| | 9940-11997R | RAL 1004 Golden Yellow | | 9840-12009R | RAL 1027 Curry | | 9840-30193R | RAL 3001 Signal Red | | 9840-81018R | RAL 8019 Grey Brown |
| | 9840-11998R | RAL 1005 Honey Yellow | | 9840-11928R | RAL 1028 Melon Yellow | | 9840-30200R | RAL 3002 Carmine Red | | 9841-01492R | RAL 9006 White Aluminum |
| | 9840-11976R | RAL 1006 Maize Yellow | | 9840-12002R | RAL 1032 Broom Yellow | | 9940-30205R | RAL 3003 Ruby Red | | 9841-01493R | RAL 9007 Grey Aluminum |
| | 9840-11994R | RAL 1007 Daffodil Yellow | | 9840-12000R | RAL 1033 Dahlia Yellow | | 9840-30195R | RAL 3004 Purple Red | | | |
| | 9840-11991R | RAL 1011 Brown Beige | | 9840-12003R | RAL 1034 Pastel Yellow | | 9840-30191R | RAL 3005 Wine Red | | | |
| | 9840-12001R | RAL 1012 Lemon Yellow | | 9840-12004R | RAL 1037 Sun Yellow | | 9840-30222R | RAL 3007 Black Red | | | |

PLEASE SHIP TO: *All fields are required to fulfill order.*

Are you are current customer? Yes No

Name: _____
 Company: _____
 Address: _____
 City/State/Zip: _____
 Country: _____
 Phone: _____
 Email: _____

To further enhance the usability of the Color Chip Selector, we offer a wall-mounted display system so you can quickly and easily access your chips. The display system can hold more than (50) 2"x3" chips. Order yours today!

I would like to order the Wall Mount Display (\$100.00)

Please email forms to tcichip@tcipowder.com.

If paying by check, please mail check with form to
 TCI Powder Coatings, 300 Martin
 Marietta Drive, Americus, GA 31710, Attn: Chip Program.